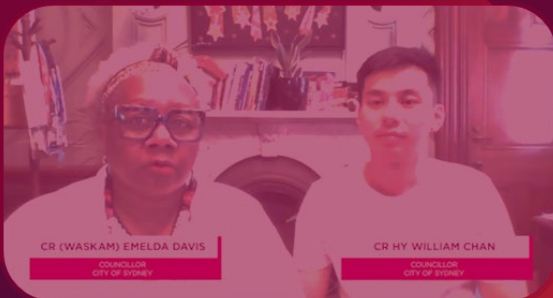


# Governing in the Climate Emergency

You are invited to join a group of senior local government leaders to participate in this exciting new program.



# Governing in the Climate Emergency: training for senior local government leaders

*"An inspiring course which will act as a catalyst to action."*

Cr Prapti Mehta, Shire of Mundaring, WA (2024 participant)



Climate Emergency Australia has developed an exciting new micro-credential for senior leaders in local government. This training is for councillors, CEOs and Executive team members who want to:

- Expand their climate leadership
- Deepen their understanding of what it means to govern well during the climate emergency
- Understand climate risk and the role of local government in managing it
- Strengthen their council's climate emergency response
- Connect with and learn from peers around Australia.

Piloted in 2024, this training program has been tailored in 2025 to suit newly elected councillors, while remaining just as relevant for experienced councillors and Executive team members.

It provides a safe space to reflect, share and learn with other senior leaders.

*"Great information, great format, great opportunity to share and listen, and a fantastic opportunity to reset."*

(Anonymous 2024 participant)

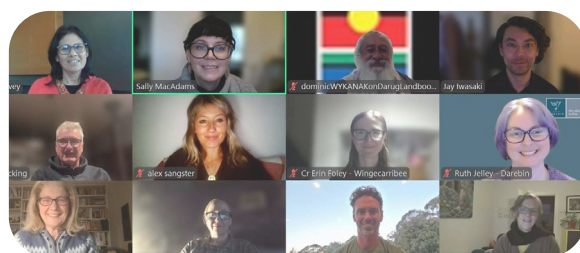
## Course requirements and format

- The program is made up of four fortnightly sessions in a live, interactive videoconferencing format
- It includes expert speakers, discussion with peers and guided interactive activities
- We strongly recommend you consider joining the program with at least one colleague.

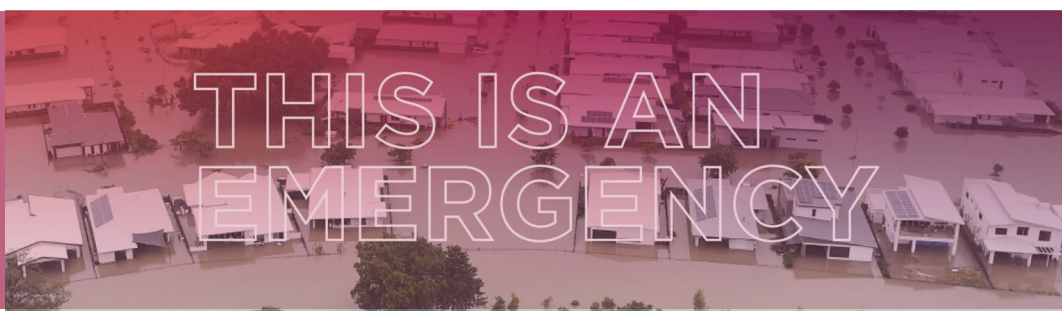
*"Working with [my colleague] was invaluable - being able to discuss and have her input and know I have her support."*



Cr Nola Firth, Tweed Shire Council, NSW  
(2024 participant)



May 2025 participants



## Course structure

The course is made up of four live, interactive, online sessions of 2.5-3 hours each. These will be held fortnightly, over 7 weeks, from late July to early September 2026:

- Session 1: Mon 27 Jul – 2:30 PM - 5:30 PM AEST
- Session 2: Mon 10 Aug – 2:30 PM - 5:00 PM AEST
- Session 3: Mon 24 Aug – 2:30 PM - 5:00 PM AEST
- Session 4: Mon 7 Sep – 2:30 PM - 5:00 PM AEST

## Topics covered

- Why this is urgent: current climate impacts, climate risk and latest climate science
- The roles and responsibilities of local government in the climate emergency including legal liability and duty of care
- The climate emergency approach – what it is and how it can help us solve the climate emergency

## Learning objectives

- Connect with peers, share learning, and expand your networks
- Get a fuller understanding of the climate emergency and what it means for local government and for your role as a leader
- Understand the need to manage the increasing risks and costs associated with climate impacts on council services
- Communicate effectively about the climate emergency
- Tap into the latest climate science to make informed decisions
- Explore best practice climate emergency responses and build your ability to meet community expectations
- Strengthen governance and ownership of your council's climate emergency response and embed it in your everyday business.

## Outputs

- Completed self-assessment of your climate emergency response
- Completed action plan for strengthening your climate emergency response

## What our graduates say



*"It gave me space in my life to focus on this critical aspect of my leadership role."*

Andrea Selvey, CEO

Shire of Augusta Margaret River, WA  
(2025 participant)



*"I got a lot of clarity about next step options to progress our Shire's work in the climate emergency."*

Cr Jennie Fenton

Bellingen Shire Council, NSW  
(2025 participant)



*"Every Councillor should do this course, whether they are at the beginning of their climate action journey, or from a council that has been on the journey for a while."*

Cr Ruth Jelley

Darebin City Council, VIC  
(2025 participant)



## Frequently asked questions

### **What is the homework like?**

Participants will read relevant, useful articles about the climate emergency approach, watch videos of practical case studies, and complete self-assessment and planning tasks. The training is designed to help you start strengthening your council's climate emergency response immediately.

### **How much does it cost?**

Prices start from \$175 for early birds from member councils and there's a great price for two or more participants from one member council - see full price list over page.

### **Can I pay by credit card?**

Most councils choose to pay via purchase order. If you would like to pay by credit card, contact [sallym@hume.vic.gov.au](mailto:sallym@hume.vic.gov.au)

### **What if my council is not a member of CEA, or hasn't declared a climate emergency – can I still participate?**

Yes, however it's cheaper for small councils who want to send more than two participants to join as a member first. If your council hasn't declared, submit an EOI and we'll be in touch to make sure the course is right for you.

### **How is this different to other training?**

Some councils and local government associations provide induction training to new councillors which may include modules on climate change. Universities and training organisations also offer private training on both broad and specialist climate change topics.

What is unique about this course is its focus on applying a climate emergency lens to your work and creating tangible actions as a result.

What is special about it is its interactive methodology. It is less about learning a great deal of content, and more about the transformational conversations you will have with your peers and colleagues, and the networks you will take with you for the rest of your career.

## What our graduates say



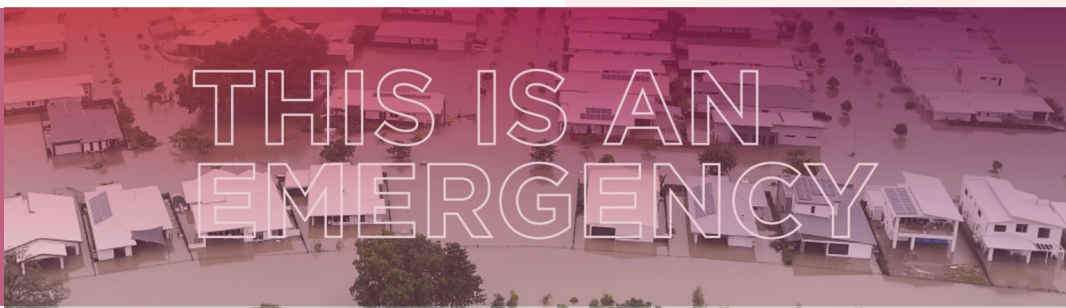
*"The training will give you confidence to ask the right questions, be your council's climate emergency champion, and bring a climate emergency lens to everything you do."*  
Cr Bernadette Thomas, Deputy Mayor,  
Maribyrnong City Council, VIC  
(2025 participant)



*"You'll be a better advocate for our communities and the planet after doing the course."*  
Cr Dominic WY Kanak  
Waverley City Council, NSW  
(2025 participant)



*"I did learn a lot... I liked that you reflect and assess what your Council does and connect and work with staff."*  
Cr Janet Pearce  
Macedon Ranges Shire Council, VIC  
(2024 participant)



## Express your interest

To find out more and register your interest in joining the next cohort, please complete your expression of interest online:

[www.climateemergencyaustralia.org.au/training](http://www.climateemergencyaustralia.org.au/training)

Please note that places are limited and we cannot guarantee entry to this round of training, however there will be future rounds if you can't attend or miss out on this one.

## Price list

### Governing in the Climate Emergency Training (all prices GST exclusive)

- Early bird (for member councils registering by 1 May 2026) - **\$195**
- Member councils (individual) - **\$295**
- Member councils (group) **\$475** (total for up to 3 participants)
- Non-member councils (individual) - **\$595**

We want this training to be as accessible as possible. If price is a barrier please contact [sallym@hume.vic.gov.au](mailto:sallym@hume.vic.gov.au)

### CEA membership costs 2026-2027

Membership tier	Population/ considerations	2026-2027 membership fees
Small councils	>25,000 people	Min \$600 (+ GST)
Medium councils	25,000-80,000 people	Min \$1,280 (+ GST)
Large councils	80,000-100,000 people	Min \$2,400 (+ GST)
Very large councils	<100,000 people and/or capital cities	Min \$4,500 (+ GST)
Other councils	Councils with very small rates bases* Councils with large rates bases**	Price upon application/ variable

\* Councils with a very small rates base relative to their population can request a reduction in fees, to be considered by the CEA Executive Committee.

\* Aboriginal and Torres Strait Islands local government bodies are eligible for complimentary membership.

\*\* Some councils opt to contribute more than the minimum fees to support CEA's ongoing operation. We encourage councils with large rates bases to consider this as a way to support CEA, and to increase the services we can provide to all councils, big and small.

